

# ANNUAL ACTION PLAN FOR 2022

## 1. Establishment

The Tatale-Sanguli District was carved out of the former Zabzugu-Tatale District with the Legislative Instrument (LI) 2067. It was one of the six (6) Districts created in 2012 in Northern Region and inaugurated as a functional entity on the 28<sup>th</sup> June, 2012.

## Vision and Mission

### *1.1. Vision Statement*

To develop and managed an environment that is capable of providing quality services while ensuring participating governance in the delivery of these services.

### *1.2. Mission statement*

The Assembly exists to provide quality socio-economic services as well as maintain law and order through mobilizing physical and financial resources while at the same time empower the citizenry through civic engagement programs to demand from duty bearers.

## 2. Location and size

The District is located in the eastern flank of the Northern Region and covers an area of about 1,130sq. Kilometres with a population density of 66.2 persons per sqkm. It falls between Longitudes 0<sup>0</sup>57'N and 0<sup>0</sup> 57'W and Latitudes 9<sup>0</sup>16N and 9<sup>0</sup>34 N. It shares boundaries with the Republic of Togo to the East, Zabzugu District to the West, Nanumba North and South and Nkwanta Districts to the South, and Saboba District to the North. See Map Below;



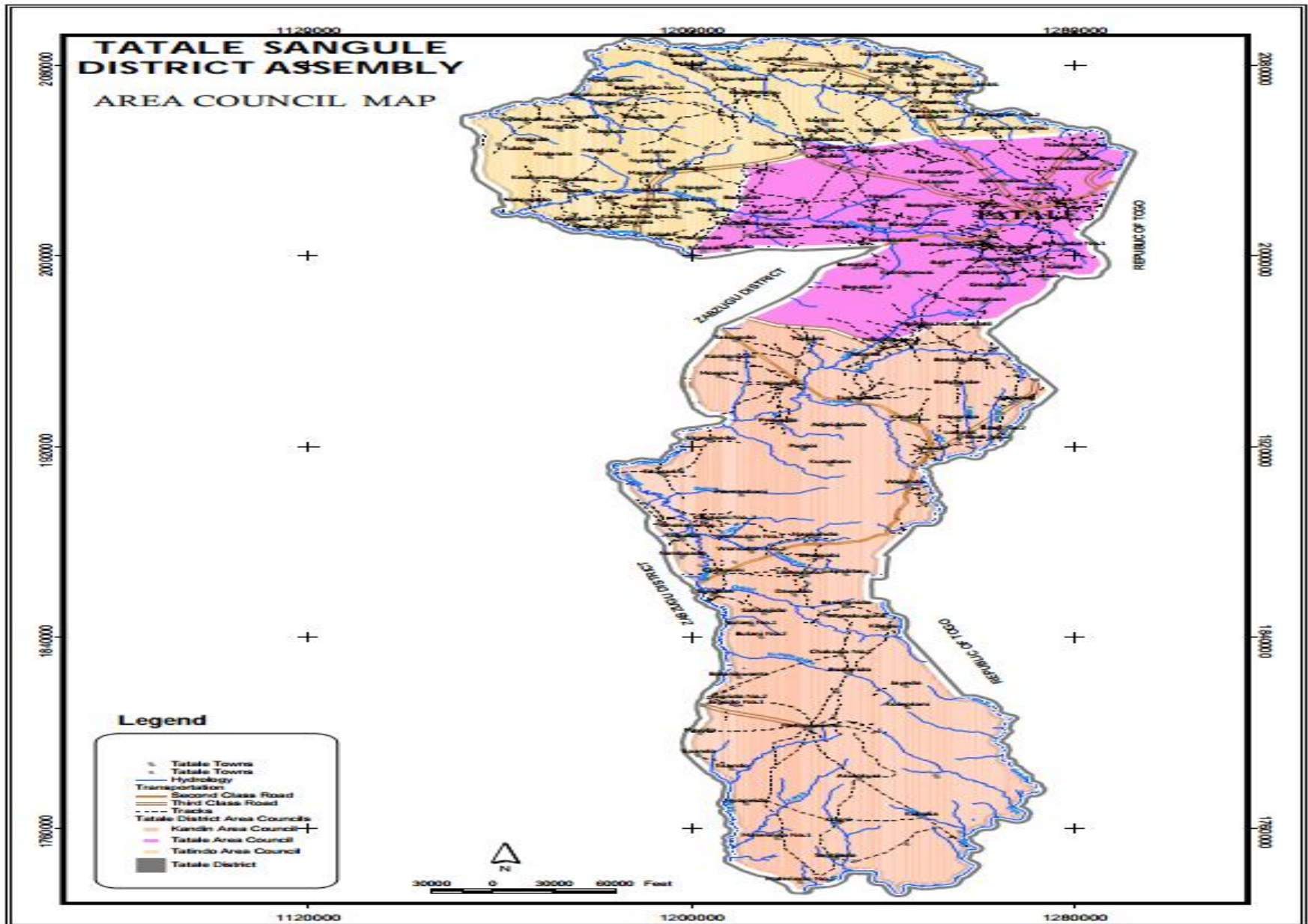


Figure 1.1: District Map of Tatalé – Sanguli District

The District is spatially located in the Eastern corridor of Northern Region. As a result, giving it the opportunity to interact with her neighbours to the East (Togo) particularly in the area of Commerce and traditional exchange programmes due to cultural and tribal linkages that exists among some inhabitants of the District and Togo. Notwithstanding the above, the entire District cannot boast of a km of an asphaltic road in addition to insecurity posed by armed robbers in their attacks of vehicles from Tamale and Yendi enroute to Tatale.

Despite these drawbacks, on the whole the District has remarkably chalked some successes in her drive to bring development to the doorsteps of the people.

## **DEMOGRAPHIC CHARACTERISTICS**

### **POPULATION**

The Population of the District according to the Population and Housing Census (PHC, 2021), stood at 74,805 representing 3.2% of the Regional figure of 2,310,939. The District has 50.4% Females and 49.6% Males with a Rural Population of 81.4% and 18.6% of Urban Population.

#### **Population Pyramid**

The figure below shows that the District age-sex structure is broad at the base and narrows upwards. The District Population is therefore more youthful in nature and has the potential of increasing the productive work force with time. However, it also implies greater provision of social amenities such as water, schools, health facilities and recreational centres to cater for the youthful population. With proper planning and prudent use of resources, the youthful nature of the population should be considered an asset.

### **ETHNICITY AND CULTURE**

The District is predominantly made up of two dominant ethnic groups of Bassares and Konkombas. Other ethnic groups are the Dagombas, Kotokolis and Fulani. The District has one paramount Basare chief based in Tatale with other divisional chiefs spread over the District. The District is dominantly Christian and traditional religion with a significant minority of Muslims. The Dagombas in the District celebrate the Damba, Fire and Eid festivals, whiles the Bassares and Konkombas celebrate the yam and Christmas festivals.

The continuous existence of the minor tribes apart from the major ones peacefully serves as catalyst for mobilising both physical and human resources for the development of the District.

## **Geophysical Characteristics**

### **CLIMATE**

The District experiences two main seasons during the year – the dry and the raining seasons. The dry season starts from late October to early May. Farming activities noted for this period are: harvesting of rice, cassava, Yam, drying of foodstuffs, preparation of farmlands and raising of yam mounds. This season is also noted for hunting and burning of bushes for game.

Most fire disasters occur during this period. Dry harmattan winds from the Sahara are experienced during the months of November to February. The coldest nights in the year are experienced in the months of December, January and February, while the hottest nights are experienced in the months of March, April and May. The mean annual maximum temperature ranges between 32<sup>0</sup>C and 35<sup>0</sup>C while the mean minimum temperature is between 21<sup>0</sup>C and 22<sup>0</sup>C.

The second season which is, the raining season, span from late May to early October. The annual average rainfall is 1200mm. It is characterized by inaccessibility of some parts of the District due to bad roads. This period is also associated with lean or food insecurity period (June to early August). Cultivation and sowing is done during this period. Late August begins harvesting of early groundnuts, yam and maize.

### **VEGETATION**

The vegetation of the District is guinea savannah, though some areas in the southern aspect fall within the transitional zone. Economic trees such as Dawadawa, Teak, Kapok and Mango can be found. There are also tall grasses, shrubs, and thorny species.

## **NATURAL ENVIRONMENT**

The natural vegetation in most parts of the District especially, around settlements has disappeared due to over cultivation, overgrazing by animals, over exploitation for fuel wood without replacement. Farming (crop and livestock) is the mainstay of the people.

Extensive use of tractors in farming has led to deterioration of soils and hence loss of productivity. Over fishing, felling of trees and farming along banks of River Oti and use of chemical fertilizers have led to depletion of fishes in the river. Bush burning and hunting have led to partial extinction of some birds, reptiles and animal species that were common in the District (e.g. guinea fowls, antelopes, grass cutters, squirrels, wart-hogs etc.). Cutting of shrubs for yam supports and construction of feeder roads also deplete the Natural environment. The major land degradation issues are the cutting of trees for firewood, charcoal burning and chain saw operation in some parts of the District.

## **BUILT ENVIRONMENT**

Human settlements in most parts of the District are built with mud and roofed with thatch. A small proportion of the mud houses are plastered with cement. These buildings roofed with 2" x 2" Wawa roofing boards, which are not also solignummed are highly susceptible to rain storm, strong wind hazards and also insect attack. These settlements are not also planned, as a result no drainage systems within communities.

## **RELIEF AND DRAINAGE**

The District has undulating land with hills found in the Sheini/Kandin areas along the Ghana-Togo border.

## **SOILS**

Soils in the District are generally sandy loam with alluvial deposits in the low lands. It is a very rich soil which results in the growth of yam, cassava, maize, groundnuts, millet, sorghum, rice and other food stuffs.

### **GEOLOGY AND MINERALS**

There are Iron Ore deposits at Sheini Community, which were being mined by the Russians, but they abandoned the mining after the 1966 Coup in Ghana. Currently no activity is on-going there and currently under the Mineral Commission of Ghana. This deposit of Iron Ore remains the major Investment Potential of the District.

### **IMPACT OF HUMAN ACTIVITIES**

The practice of indiscriminate and intensive felling of trees for fuel, wood as well as charcoal burning as economic activities (mainly by women) in the district adversely affecting the vegetation. Inappropriate farming such as the slash and burn method, over cropping as well as bush burning/fire are seriously affecting the natural vegetation.

The activities of the Fulani Herdsmen in the last two decades particularly in farming areas severely affect the vegetation, leading to deforestation and desertification in the areas. In addition, the emergences of new settlements and expansion of existing one as well as settlement of migrant Fulanis in the district further affect the natural vegetative cover in the district.

### **GOVERNANCE**

#### **Mandate**

In pursuance of section 46 sub-section1 of the Local Government Act, 1993, Act 462 establishes the Tatala-Saguli District Assembly as the highest political and administrative authority at the district level that has been charged with the responsibility of formulating and executing plans, programmes and strategies for effective mobilization of resources to ensure the overall development of the district.

#### *Composition of the Assembly*

The Tatale-Sanguli District Assembly comprises of 28 Assembly persons (28 males and 1 female), 19 elected and 9 appointed in addition to the DCE and MP who have no voting rights. The assembly also has a Presiding Member who presides over meetings of the Assembly and is in charge of complains and public relations.

The decentralization principle in the new local government system emphasizes on planning to start from the local level and go up rather than the reverse. The development process therefore starts at the community level and is coordinated first at the Area/town council and secondly at the District level by the DPCU composed of the key personnel of the decentralized departments. The DA structure is made up of Unit Committees at the community level, followed by the Area Councils and the District Assembly at the apex.

There are three Area councils namely Tatale, Tatindo and Kandin/Sheini with a total of 19 electoral areas and 109 communities. Though the Area councils have designated location and structures they are not functional. They equally have no staff manning the offices.



CREATE OPPORTUNITIES FOR ALL GHANAIS (SOCIAL DEVELOPMENT) ---- 2022

Programme (PBB)	Sub – Programme (PBB)	Broad Activities	Location	Timeframe (year 2022)				Cost			Programme Status		Implementing Institution/Department	
				Q1	Q2	Q3	Q4	GoG	IG F/A BFA	Other	New	Ongoing	Lead	Collaborating
Social Service Delivery	Health Delivery	Purchase of comfort items for certain health facilities	Selected health compounds	x	x			60,234.00	2,000		x		GHS	TSDA
Social Service Delivery	Health Delivery	Furnishing of 2No. CHPS Compounds	Selected CHPS	x	x			7,300.00	1,600		x		GHS	TSDA
Social Service Delivery	Health Delivery	Organize quarterly District Health Committee meetings	Tatale	x	x	x	x	31,200			x		GHS	TSDA
Social Service Delivery	Health Delivery	Support District Emergency Preparedness Committee to combat	Tatale		x	x	x	24,600			x		GHS	TSDA



**CREATE OPPORTUNITIES FOR ALL GHANAIS (SOCIAL DEVELOPMENT)**

Programme (PBB)	Sub – Programme (PBB)	Broad Activities	Location	Timeframe (year 2022)				Cost			Programme Status		Implementing Institution/Department	
				Q1	Q2	Q3	Q4	GoG	IGF/ABFA	Other	New	Ongoing	Lead	Collaborating
Social Service Delivery	Education and Youth Development	Provision of 30 tables and 300 benches for TEPASHS Dining Hall	Tatale		x		x	67,432.00			x		GES	TSDA
Social Service Delivery	Education and Youth Development	Provision of 1000 dual desks, mono desks and teachers’ desks for Public Primary and JH schools	District	x	x	x	x	87,000.00			x		GES	TSDA
Social Service Delivery	Education and Youth Development	Support for sports and Culture	District wide	x	x	x	x	35,000	1,000		x		GES	TSDA
Social Service	Education and Youth Development	Renovation of Primary school	Dondoni	x	x	x	x	33,438.0			x		GES	TSDA

Delivery	nt							0						
Social Service Delivery	Education and Youth Development	Re-roofing of Partly ripped off four schools in the district by rain storm	Kparbutabu, Elordo and Sanguli	x	x	x	x	49,204.00			x		GES	TSDA
Social Service Delivery	Education and Youth Development	Support for District Director of Education quarterly Monitoring	District wide	x	x			4,000	2,400		x		GES	TSDA
Social Service Delivery	Education and Youth Development	Organize District Education Oversight Committee (DEOC) quarterly meetings	Tatale	x	x	x	x	23,000			x		GES	TSDA
Social Service Delivery	Education and Youth Development	Rehabilitations of school buildings	Selected Schools	x	x	x	x	143,322.09			x		GES	TSDA
Social Service Delivery	Education and Youth Development	Provision of Furniture for Basic Schools	Tatindo Sheini Sachilbo	x	x	x	x	100,000			x		GES	TSDA

			Daproba											
Social Service Delivery	Education and Youth Development	Construction of 2No. 3unit classroom block	Polariado & Sanguli	x	x	x	x	390,000			x		GES	TSDA
Social Service Delivery	Education and Youth Development	Emergency works for schools	District wide	x	x	x	x	100,000			x		GES	MP

CREATE OPPORTUNITIES FOR ALL GHANAIS (SOCIAL DEVELOPMENT)

Programme (PBB)	Sub – Programme (PBB)	Broad Activities	Location	Timeframe (year 2022)				Cost			Programme Status		Implementing Institution/Department	
				Q1	Q2	Q3	Q4	GoG	IGF/ABFA	Other	New	Ongoing	Lead	Collaborating
Social Service Delivery	Social Welfare and Community Development	Provide financial support to Person with Disabilities (PWDs)	District wide	x	x	x		100,000			x		CD&SW	TSDA
Social Service Delivery	Social Welfare and Community Development	Provide financial support to the aged and vulnerable	District wide	x	x			40,000			x		CD&SW	TSDA
Social Service Delivery	Social Welfare and Community Development	Sensitize the youth on the dangers of early Sex	Selected Communities		x	x		5,000	2,300		x		CD/SW	TSDA

Social Service Delivery	Social Welfare and Community Development	Organise public campaign against child labour	District wide	x	x	x	x	8,000	1,000		x		CD&SW	TSDA
Social Service Delivery	Social Welfare and Community Development	Awareness creation on the availability of services to the citizens (Social services)	District wide	x	x	x	x	8,000	1,000		x		CD&SW	TSDA
Social Service Delivery	Social Welfare and Community Development	Sensitization of Stakeholders on Child trafficking	District wide	x		x		3,456.00	2,130		x		CD/SW	TSDA
Social Service Delivery	Social Welfare and Community Development	Collaborate with other stakeholders on referrals cases	District wide	x	x	x	x	8,000	1,000		x		CD&SW	GPS/GIS

Social Service Delivery	Social Welfare and Community Development	Build the capacity of PWD on hand skills	District wide	x	x	x	x	8,000	1,000		x		CD&SW	TSDA
Social Service Delivery	Social Welfare and Community Development	Sensitization of the public on child marriage.	Selected Communities	x	x	x	x	20,000			x		CD&SW	TSDA
Social Service Delivery	Social Welfare and Community Development	Register two hundred and five (205) PWD's in to NHIS	District wide	x		x	x	28,600	2,100		x		CD&SW	TSDA
Social Service Delivery	Social Welfare and Community Development	Monitoring or follow up of Child Protection cases like Child Trafficking	District wide	x	x	x	x	23,870			x		CD&SW	TSDA



Social Service Delivery	Social Welfare and Community Development	Sensitize men and women on the signs of domestic violence	O section and Benatabe	x	x	x	x	4,320.00			x		CD&SW	TSDA
Social Service Delivery	Social Welfare and Community Development	Sensitize 23 men and 34 women on ways of combating discrimination against women on land ownership	Sanguli, &Tatindo	x	x	x	x	9,80.00			x		CD&SW	TSDA

**BUILD A PROSPEROUS COUNTRY (ECONOMIC DEVELOPMENT)-BAC**

Programme (PBB)	Sub – Programme (PBB)	Broad Activities	Location	Timeframe (year 2022)				Cost			Programme Status		Implementing Institution/Department	
				Q1	Q2	Q3	Q4	GoG	IGF/ABFA	Other	New	Ongoing	Lead	Collaborating
Economic Development	Trade, Tourism and Industrial Development	Internship training for five (5) clients	Salaga		x			16,700	4,560		x		BAC	TSDA
Economic Development	Trade, Tourism and Industrial Development	Facilitate provision of sheanut processing center for Chakundo Women group by Tree Aid Ghana	Chakundo		x			98,564	4,560		x		BAC	Tree Aid
Economic Development	Trade, Tourism and Industrial Development	Business counseling and coaching	Tatale, Kuyuli & Benatabe		x	x		9,120	2,100		x		BAC	TSDA

	nt													
Economic Development	Trade, Tourism and Industrial Development	Facilitate the formalization of local business	Tatale	x		x		13,450	3,420		x		GPSNP	TSDA
Economic Development	Trade, Tourism and Industrial Development	Formation of Village Loans and Savings in Communities to encourage savings and access to credit from group saved fund	11 Selected Communities	x	x	x	x	3,211			x		GPSNP	TSDA
Economic Development	Trade, Tourism and Industrial Development	Train and equipped 215 men and women on guinea fowl rearing	Tatale	x		x		6,546	3,234		x		GPSNP	TSDA
Economic Development	Trade, Tourism and	Organize commercial for a with business community	Tatale	x		x		6,546			x		GPSNP	TSDA

	Industrial Development													
Economic Development	Trade, Tourism and Industrial Development	Train and equipped 142 women on gari processing	Tatale	x			x	3,425	7,89		x		BAC	TSDA
Economic Development	Trade, Tourism and Industrial Development	Train and Provide start-up kits for 94 beneficiaries in soap making and groundnut processing.	Tatale	x		x		4,343	1,340		x		BAC	TSDA

**CREATE OPPORTUNITIES FOR ALL GHANAIS (SOCIAL DEVELOPMENT)**

Programme (PBB)	Sub – Programme (PBB)	Broad Activities	Location	Timeframe (year 2022)				Cost			Programme Status		Implementing Institution/Department	
				Q1	Q2	Q3	Q4	GoG	IGF/ABFA	Other	New	Ongoing	Lead	Collaborating
Social Service Delivery	Health Delivery	Drilling of 8 No. boreholes	Selected communities	x		x	x	100,000			x		EHSU	MP
Social Service Delivery	Health Delivery	Rehabilitation of Boreholes	District wide	x	x	x	x	10,000			x		EHSU	TSDA
Social Service Delivery	Health Delivery	Supply of sanitary equipment and cleaning materials	Tatale	x	x	x	x	18,000	1,234		x		EHSU	TSDA
Social Service Delivery	Health Delivery	Monitor the activities of WSMT/WATSAN	District wide	x		x		2,000			x		EHSU	TSDA

Social Service Delivery	Health Delivery	Collaborate with CWSA on the drilling of boreholes	Tatale	x	x	x	x	5,000			x		EHSU	TSDA
Social Service Delivery	Health Delivery	Extension of Kuyuli water project	Nakple-Borile	x		x		40,000		x			EHSU	TSDA
Social Service Delivery	Health Delivery	Facilitate M&E of sanitation companies services provided in the district	District wide	x		x		7,100		x			EHSU	TSDA
Social Service Delivery	Health Delivery	Facilitate and supervised desilting of public drains	Tatale	x	x	x		3,050		x			EHSU	TSDA
Social Service Delivery	Health Delivery	Facilitate public sensitizations on household food hygiene and safety	District wide	x	x	x		4,723		x			EHSU	TSDA

MAINTAIN A STABLE, UNITED AND SAFE COUNTRY (GOVERNANCE, CORRUPTION AND ACCOUNTABILITY)

Programme (PBB)	Sub – Programme (PBB)	Broad Activities	Location	Timeframe (year 2022)				Cost			Programme Status		Implementing Institution/Department	
				Q1	Q2	Q3	Q4	GoG	IGF/ABFA	Other	New	Ongoing	Lead	Collaborating
Management and Administration	GA, F&R M, PB &C and H R	Facilitate 3 Area Council's meetings	A/Cs		x	x		20,130	3,120		x		TSDA	DPCU
Management and Administration	GA, F&R M, PB &C and H R	Organise 2 Town Hall meetings every year to discuss plans implementation	District wide	x		x		25,150	2,140		x		TSDA	DPCU
Management and Administration	GA, F&R M, PB &C and H R	Donate street lights to brighten the road between Kuyuli and Benatabe	District wide	x		x		25,150	2,140		x		TSDA	Chiefs

Management and Administration	GA, F& R M, PB &C and H R	Support Gender activities in the district	District wide	x		x		26,789	2,140		x		TSDA	Communities
Management and Administration	GA, F& R M, PB &C and H R	Reshaping and gravelling of 16km road	Kubalim - Asulokura & Jagrido-Bulani	x		x		125,000			x		TSDA	MP
Management and Administration	GA, F& R M, PB &C and H R	Quarterly meeting of Executive committee of the Assembly	Tatale	x	x	x	x	16,200	2,100		x		TSDA	DPCU
Management and Administration	GA, F& R M, PB &C and H R	Reshaping of 22km road	Kubalim - Materido, Asulokura - Tuugbini Nahuyili - Taguldo-Wamaldo	x		x		125,000			x		TSDA	MP



Management and Administration	GA, F& R M, PB &C and H R	Organized Mid-year and Annual review meetings each year	Tatale			x		14,789	3,120		x		TSDA	DPCU
Management and Administration	GA, F& R M, PB &C and H R	Organized quarterly budget &DPCU committee meetings	Tatale	x	x	x	x	32,300	3,135		x		TSDA	DPCU
Management and Administration	GA, F& R M, PB &C and H R	Hon.DCE engagements with the 109 communities	Tatale	x	x	x	x	67,230.00			x		TSDA	DPCU
Management and Administration	GA, F& R M, PB &C and H R	M&E and supervision of all projects of the Assembly	Project sites	x	x	x	x	14,438	6,139		x		TSDA	DPCU
Management and Administration	GA, F& R M, PB &C and H R	Preparation of Annual Action Plans (AAP) and composite budgets	Tatale			x		27,120	2,897		x		TSDA	DPCU

		annually												
Management and Administration	GA, F&R M, PB &C and HR	Collaborate with electricity service providers (VRA) on their services (meetings, visits, information sharing)	Tatale			x		27,120	2,897		x		TSDA	VRA
Management and Administration	GA, F&R M, PB & C and HR	Quarterly General Assembly meetings	Tatale	x		x		25,150	2,140		x		TSDA	DPCU
Management and Administration	GA, F&R M, PB & C and HR	Organize Management/Staff meetings quarterly	Tatale	x	x	x	x	15,890	2,480		x		TSDA	DPCU
Management and Administration	GA, F&R M, PB &C and HR	Collaborate with water service providers(CWSA) on their service	Tatale			x		27,120	2,897		x		TSDA	CWSA

n		provision meetings, visits, information sharing)												
Management and Administration	GA, F& R M, PB & C and H R	Organize District Security Committee (DISEC) meetings	Tatale	x		x		25,150	2,140		x		TSDA	DPCU
Management and Administration	GA, F& R M, PB & C and H R	Purchase of stationery	Tatale	x		x		34,869	2,140		x		TSDA	DPCU
Management and Administration	GA, F& R M, PB & C and H R	Organise and service quarterly meeting of five (5) statutory committees	Tatale	x	x	x	x	20,230			x		TSDA	DPCU

Management and Administration	GA, F&R M, PB & C and HR	Sensitize GPRTU on ways of curbing accidents on the Tatale-Yendi highway road	Tatale	x	x	x		4,300					DA/GPS	GPRTU
Management and Administration	GA, F&RM, PB&C and HR	Procurement of office facilities and accessories	Tatale	x	x	x	x	81,559			x		TSDA	DPCU
Management and Administration	GA, F&RM, PB&C and HR	Formation of District Grievances Committee for Yendi-Tatale highway road	Tatale	x	x			2,500					TSDA	SAVANAH SIGNATURES
Management and Administration	GA, F&R M, PB & C and HR	Service and maintenance of official vehicles	District wide	x	x	x	x	10,000			x		TSDA	DPCU
Management and Administration	GA, F&R M, PB & C and HR	Reshaping of roads	District wide	x	x	x	x	160,000			x		TSDA	DPCU
Management and Administration	GA, F&R M, PB & C and HR	Completion of Community Center	Tatale	x	x	x	x	199,686.15			x		TSDA	DPCU

Management and Administration	GA, F& R M, PB & C and H R	Completion of the two small earth dams	Nahuyili & Nakpal eborile	x	x	x	x	310,144.59			x		TSDA	DPCU
Management and Administration	GA, F& R M, PB & C and H R	Furnishing of the new District Assembly Complex	Tatale	x	x	x	x	150,000.00			x		TSDA	DPCU
Management and Administration	GA, F& R M, PB & C and H R	Collaborate with Catholic church to develop the Sheini Grotto for tourism attraction	Sheini		x	x		160,000				x	TSDA	CATHOLIC CHURCH
Management and Administration	GA, F& R M, PB & C and H R	Repairs of office building	Tatale	x	x	x	x	80,000			x		TSDA	DPCU
Management and Administration	GA, F& R M, PB & C and H R	Build capacity of district staff	Tatale	x	x	x	x	45,859			x		TSDA	DPCU

**BUILD A PROSPEROUS COUNTRY (ECONOMIC DEVELOPMENT)**

Programme (PBB)	Sub – Programme (PBB)	Broad Activities	Location	Timeframe (year 2022)				Cost			Programme Status		Implementing Institution/Department	
				Q1	Q2	Q3	Q4	GoG	IGF/A BFA	Other	New	Ongoing	Lead	Collaborating
Economic Development	Agricultural Development	Raised 4770 cashew seedlings by June, 2022	District wide		x			1,500.00	1,500.00			x	Dept of Agric.	TSDA
Economic Development	Agricultural Development	Train 30 PFJ beneficiaries on GAPs by June, 2022	District wide		x			600.00	400.00			x	Dept of Agric.	TSDA
Economic Development	Agricultural Development	Sensitize farmers on proper use of agro-chemicals by Sept., 2022.	District wide	x	x			8,700.00	350.00			x	Dept of Agric.	TSDA
Economic Development	Agricultural	Train 40 women in food	District wide				x	8,900.00	520.00			x	Dept. of	TSDA

nt	Developme nt	fortification using soya beans by Dec., 2022											Agric.	
Economic Developme nt	Agricultural Developme nt	Eight (8) AEAs to Conduct 1536 home and farm visits to farm families by Dec., 2022.	District wide	x	x	x	x	8,000.0 0	400.00			x	Dept. of Agric.	TSDA
Economic Developme nt	Agricultural Developme nt	Organise District RELC planning session by June, 2022.	District wide		x			810.00	450.00			x	Dept. of Agric.	TSDA
Economic Developme nt	Agricultural Developme nt	Conduct one TEDMAG training for 200 staff annually,202 2	District wide	x	x	x	x	2,480	480.00			x	Dept. of Agric.	TSDA
Economic Developme nt	Agricultural	Provision of storage	Chakund o	x	x	x	x	54,562				x	Dept. of	TSDA

nt	Developme nt	facilities to reduce post harvest losses											Agric.	
Economic Developme nt	Agricultural Developme nt	Vaccinate 1000 cattle against CBPP by June, 2022.	District wide		x			630.00	560.00			x	Dept. of Agric.	TSDA
Economic Developme nt	Agricultural Developme nt	Collect, compile, document and submit (12) market reports annually, 2022.	District wide	x	x	x	x	2,000.0 0	400.00			x	Dept. of Agric.	TSDA
Economic Developme nt	Agricultural Developme nt	Collect, compile, document and submit (4) quarterly and (1) annual report annually, 2022.	District wide	x	x	x	x	2,000.0 0	2,000.0 0			x	Dept. of Agric.	TSDA
Economic		Purchase	Tamale				x	50,000				x	Dept.	TSDA



Development	Agricultural Development	items for farmers day											of Agric.	
Economic Development	Agricultural Development	Conduct (2) field demonstrations on improved maize production by Dec., 2022	District wide		x			2,100.00	470.00			x	Dept. of Agric.	TSDA
Economic Development	Agricultural Development	Conduct (3) farmer field days by Dec., 2022.	District wide	x	x	x	x	2,400.00	1,100.00			x	Dept. of Agric.	TSDA
Economic Development	Agricultural Development	Purchase of farm inputs	Tatale	x	x	x	x	21,265				x	Dept. of Agric.	TSDA
Economic Development	Agricultural Development	Train farmers in bee-keeping as an alternative source of	District wide	x				1,540.00	300.00			x	Dept. of Agric.	TSDA

		livelihood												
Economic Development	Agricultural Development	Sensitize farmers in conservation Agriculture	District wide		x			2,000.00	460.00			x	Dept. of Agric.	TSDA

**BUILD A WELL PLANNED AND SAFE COMMUNITIES WHILE PROTECTING THE NATURAL ENVIRONMENT  
(ENVIRONMENT, INFRASTRUCTURE AND HUMAN SETTLEMENTS)**

Programme (PBB)	Sub – Programme (PBB)	Broad Activities	Location	Timeframe (year 2022)				Cost			Programme Status		Implementing Institution/Department	
				Q1	Q2	Q3	Q4	GoG	IGF/ABFA	Other	New	Ongoing	Lead	Collaborating
Environmental Sanitation and Management	Disaster Prevention and Management	Sensitized farmers on soil fertility improvement	District wide			x		7,000.00			x		NADMO	TSDA
Disaster Management and prevention	Disaster Prevention and Management	Purchase of relief items	Tatale	x	x	x	x	60,000	5000		x		NADMO	TSDA
Disaster Management and prevention	Disaster Prevention and Management	Training of DVG'S (Disaster volunteer Groups)	Selected Communities			x		4,000.00	600		x		NADMO	TSDA

Disaster Management and prevention	Disaster Prevention and Management	Sensitization on bush burning	District wide		x		5,000.00	650		x		NADMO	TSDA
Disaster Management and prevention	Disaster Prevention and Management	Hold monthly radio discussions on environment	Tatale			x	300			x		NADMO	TSDA
Disaster Management and prevention	Disaster Prevention and Management	Sensitize people on the effects of deforestation and the need for planting trees	Sangbaa		x		2,100,000.00	700		x		NADMO	TSDA
Disaster Management and prevention	Disaster Prevention and Management	Collaborate with Forestry Commission to observe green Ghana day ( plant trees )	DA&SH S			x	5,500.00			x		NADMO	Forestry Commission
Disaster Management and prevention	Disaster Prevention and Management	Organize sensitization on climate change	14 Communities			x	2,000.00			x		TSDA	NADMO

Disaster Management and prevention	Disaster Prevention and Management	Collaborate with Dept of agric to organize sensitization on the use of organic fertilizers over chemical pesticides	Selected Communities			x		3,300			x		NADMO	AGRIC
Disaster Management and prevention	Disaster Prevention and Management	Prepare climate change and disaster risk reduction action plan	District wide			x		3,300			x		NADMO	TSDA
Disaster Management and prevention	Disaster Prevention and Management	Form environmentally related clubs in 20 JHS schools	Selected schools			x		4,200			x		GES	NADMO

**BUILD A WELL PLANNED AND SAFE COMMUNITIES WHILE PROTECTING THE NATURAL ENVIRONMENT  
(ENVIRONMENT, INFRASTRUCTURE AND HUMAN SETTLEMENTS)-PHYSICAL AND SPATIAL PLANNING**

Programme (PBB)	Sub – Programme (PBB)	Broad Activities	Location	Timeframe (year 2022)				Cost			Programme Status		Implementing Institution/Department	
				Q1	Q2	Q3	Q4	GoG	IGF/ABFA	Other	New	Ongoing	Lead	Collaborating
Social Services	Spatial Development Delivery	Organize sensitization programs on the importance of spatial planning	District wide	x		x			4,730		x		PPD	SPC
Social Services	Spatial Development Delivery	Organize monthly SPC and TSC to prepare SDF on permit applications/approve of local plans	District wide	x	x	x	x			23,405	x		PPD	SPC
Social Services	Spatial Development Delivery	Facilitate the preparations of LP and SP for Tatale township	Tatale	x	x	x	x			15,000	x		PPD	SPC
Social Services	Spatial Development Delivery	Prepare spatial development framework for the district	District wide	x	x	x	x			23,000	x		PPD	SPC

Social Services	Spatial Development Delivery	Preparation and printing of street naming maps	Tatale	x				6,000					PPD	TSDA
Social Services	Spatial Development Delivery	Identify and name 5 streets with signages	Notob Street, Waliba Street, .Lantam Street, Wunandum street & Kobandom Street	x	x					20,000			PPD	Opinion leaders